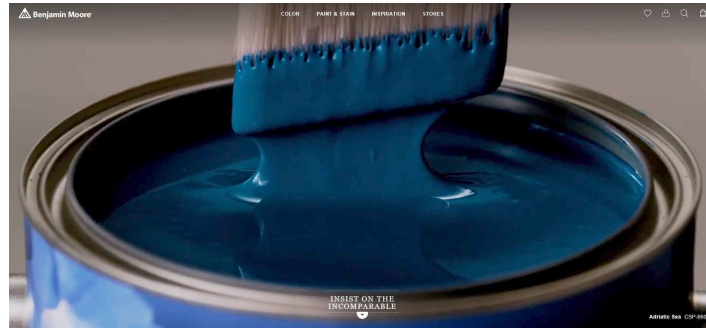


# Benjamin Moore & Co. Moore's COLOR<sub>x</sub>® System Release Notes & Installation Guide Version 6.37.2000



This new COLOR<sub>x</sub> release contains the following changes to COLOR<sub>x</sub>

## **Dual Tint Products**

The products listed below are now available to be tinted in Gennex or Color Preview colorants

Insl-X Cabinet Coat CC65 Satin - U.S. & Canada

Insl-X Cabinet Coat CC66 Semi-gloss - U.S. only

Corotech Pre-Catalyzed WB Epoxy V341 Semi-gloss - U.S. & Canada

Corotech Pre-Catalyzed WB Epoxy V342 Eggshell - U.S. & Canada

INSL-X Sure Step Anti-Slip - SU U.S. & Canada / Compliant CSU - U.S. only

See page 2 for the details

## **Insl-X Aqua Lock Deep Base Primer (U.S. only)**

INSL-X Aqua Lock Deep Base Gennex color prescriptions are now included in COLOR<sub>x</sub> when a deep base primer is recommended.

This deep tint base can now be used for colors requiring a primer.

Colors that require a deep base primer to achieve the color will bring up a message in COLOR<sub>x</sub>, allowing you to choose either the Benjamin Moore Fresh Start 046-04 primer or the Aqua Lock AQ-0577 primer. Then you can print and dispense the primer you choose.

See page 3 for details.

## **National Accounts Colors Added**

Colors for: Akelius; Goodwin Knight; School of Rock; Carter Hill Homes; Key Structures

## **Benjamin Moore Prescriptions**

Updated Benjamin Moore prescriptions

For the complete list of updated prescriptions, see page 5

## Using Dual Tint Products (Gennex or Color Preview colorants)

INSL-X Cabinet Coat CC65 and CC66 / Corotech V341 & V342 / Sure Step SU / Compliant Sure Step CSU (U.S. only) can be tinted with Color Preview or Gennex colorants.

COLORx will give you the proper prescriptions and custom formulas for the system you choose.

When you look up a prescription or perform a custom match for the first time in Cabinet Coat CC65 or CC66; Corotech V342 or V342; Sure Step SU or CSU, you will be prompted to choose which colorant system you want to use, as shown below.

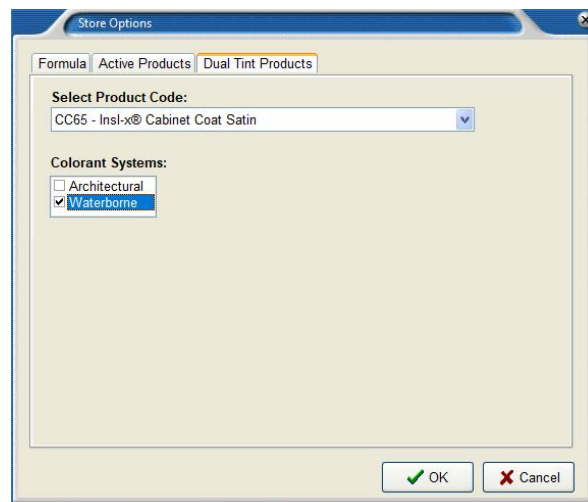


Click on the button (Color Preview or Gennex) to choose which system to use.

When you choose the colorant system for the product, you will no longer be prompted to choose when looking up colors in that product again.

However, you will be able to change the colorant system to use if you wish to.

Simply choose the **File** dropdown on the main COLORx menu and choose **Modify Store Options**. Then click on the **Dual Tint Products** tab as shown below. Select the **Select Product Code** dropdown to choose the colorant system.



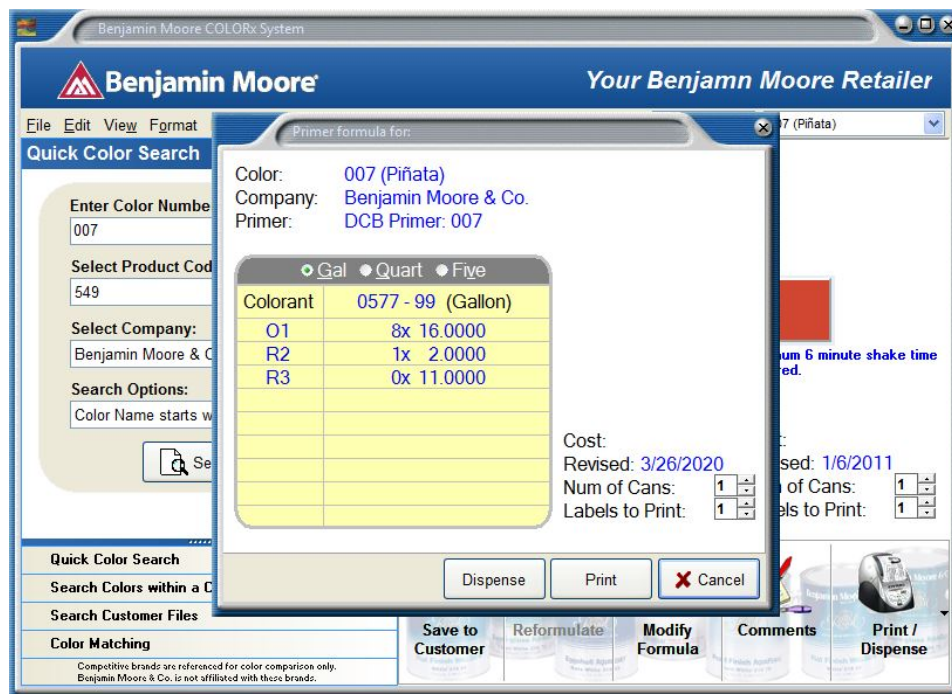
Now check the colorant system you wish to activate, and then uncheck the other system. Now click on OK. You will not be prompted to choose the colorant system when you look up colors or do custom matching matches in that product

## INSL-X Aqua Lock Deep Tint Primer Choice

When accessing a Benjamin Moore color, which requires a deep base primer, a new message will appear on the screen giving you the choice of picking the primer use wish to use. The Benjamin Moore Fresh Start deep base primer (046) or the INSL-X Aqua Lock deep tint primer (0577)



Simply click on the button of the primer with wish to print or dispense.



## **COLORx Help**

While in the COLOR<sub>x</sub> application, you can view the Operator's Manual and the Quick Start Guide by clicking on Help, then choose COLOR<sub>x</sub> Help for the manual or COLOR<sub>x</sub> Quick Start.

## **Best Practices for Custom Color Matching and Competitive Company Colors**

Always save and store custom matched color formulas and competitive company formulas made for your customers in the Customer File database in COLOR<sub>x</sub>. This will assure that you have the exact formula that the customer previously purchased.

We routinely update our calibration database files to improve our color matching capabilities, which may alter the original formula.

Following this procedure will allow the customer to purchase the same formula in the event that they return to purchase more of this color for touch up.

## **Competitive Color Prescriptions**

We have amassed an extensive collection of colors from competitor's color merchandise. This information is available in our Color Search option in COLOR<sub>x</sub>. To see if a color exists, simply follow the same procedure you would for a Benjamin Moore color. Enter a color number or name, along with a product, and either select an individual company or check the "Search All" box above the "Select Company" drop down list. (See the Operator's Manual for more details.)

Unlike a Benjamin Moore color that displays a prescription created and approved by our Color Prescribing Lab, we store the measurement of the competitive color. The measurement is calculated in our color matching application to generate a color prescription the same as if you measured a custom color with a spectrophotometer.

When a customer requests a match to a competitive color, you should follow this procedure.

First, look up the color in COLOR<sub>x</sub> and determine if we have it in our system. If it is, a prescription will be calculated and displayed. Click on the button "Closest BM Color", this will list the five closest Benjamin Moore colors. Suggest to the customer that they look at our closest colors and see if that meets their color requirements. This has two benefits. If the color is acceptable, then you have a tested Benjamin Moore prescription to make the color and you have changed a competitive color specification to a Benjamin Moore color specification.

Second, if you or the customer has a sample of the competitive color merchandise then match the color merchandise just as you would match a custom color. Since the customer will be judging the color to the merchandise sample that should be your target. Depending on the age and condition of the merchandise, it may not represent what we have stored in COLOR<sub>x</sub>.

Finally, if the customer does not like our closest color and no sample of the color is available then use the calculated match in COLOR<sub>x</sub>.

If you have any questions, please contact our Color Technology Representatives by calling 800-809-9213.

## **Prescription Changes since COLORx Version 6.37.1000**

### **United States**

The following products had their prescriptions modified for multiple colors: 147, 148, 792, CC55, CC56, N794. Please refer to the revision date when calling up prescriptions for these products. A revision date after 3/31/20 indicates a change in the prescription since COLORx version 6.37.1000.

The following products have had prescriptions added for the Gennex colorant system: CC65, CC66, CSU0, SU0, V341, V342.

The following products have had prescriptions added for the Color Preview colorant system: N31.

The following prescriptions have been modified for product 484: 2062-30, 2112-40.

## **Prescription Changes since COLORx Version 6.37.1000**

### **Canada**

The following products had their prescriptions modified for multiple colors: K147, K148, K792, CC55, F794. Please refer to the revision date when calling up prescriptions for these products. A revision date after 3/31/20 indicates a change in the prescription since COLORx version 6.37.1000.

The following products have had prescriptions added for the Gennex colorant system: CC65, SU0, V341, V342.

The following products have had prescriptions added for the Color Preview colorant system: N31.

The following prescriptions have been modified for product K484: 2062-30, 2112-40.

# Moore's COLOR<sub>x</sub>® System Installation Guide

The Benjamin Moore COLOR<sub>x</sub> Prescription Book and Color Matching System programs are incorporated into a single software package. It is available on the Benjamin Moore Retailer Portal, Mybenjaminmoore.com and runs under the Windows® XP service pack 3, Windows® 7, Windows® 8, and Windows® 10 operating systems.

## COLOR<sub>x</sub> Minimum System Requirements

- Intel Pentium® processor 1 GHz or higher.
- 2 GB of RAM
- 4 GB of free hard disk space.
- Video card capable of supporting 16M colors
- Printer
- Serial or USB port for spectrophotometer & barcode reader
- Windows® XP service pack 3, Windows® Vista, Windows® 7, Windows® 8 or Windows® 10

## X-Rite MetaVue Spectrophotometer Minimum System Requirements

- Windows 7 SP1 (32 or 64 bit)
- Windows 8/8.1 (32 or 64 bit)
- Windows 10 (32 or 64 bit)

*Windows XP and Vista are not supported for the new MetaVue Spectrophotometer*

## Installation

If you are downloading COLOR<sub>x</sub> from the Benjamin Moore Retailer Portal, mybenjaminmoore.com, read the "COLOR<sub>x</sub> Download Instructions." This will instruct you on how to download and install COLOR<sub>x</sub> on your computer.

If you don't have internet access on the computer running COLOR<sub>x</sub>, you can download the COLOR<sub>x</sub> installation file directly to a flash drive from another computer which has internet access.

To install COLOR<sub>x</sub> from a flash drive, be sure that there are no other applications running. They should be closed before attempting to install the program. If your system has any automatic virus detection software enabled, it should be disabled before installing.

Insert the flash drive into a USB port. Open Windows Explorer and click on the flash drive letter. Now click on the ColoRx6xxxxxx.exe file.

The installation procedure will automatically start and bring you to the **Welcome Screen**. The Setup Wizard will guide you through the installation.

## License Agreement

As you start the installation, the License Agreement screen appears. Be sure to read this license agreement. If you disagree with the terms of the agreement, then click on the Cancel button to exit the installation. If you agree with the terms, then check the appropriate box to continue the installation. The installation will prompt you to select the software region, United States or Canada. The default is United States.

***Note:** If you have a previous version of COLOR<sub>x</sub>® 6, this installation will not write over any stored samples or stored customers. They can still be accessed.*